

A handy overview

Explore all patterns featured in Poppy Magazine 23 and easily determine the required meters and notions for each item.

Share your handmade item with us by tagging **#POPPYMAGAZINE**



P0323 DRESS

Size 80-86-92-98-104-110

Fabric usage

90-100-110-120-130-140 cm
36-39-44-47-52-55 inches

Notions

- Elastic 5mm
- Buttons 4
- Loop
- Fusable interfacing
- Optional: strap for bow 16cm



P0523 SHORT

Size 92-104-116-128-140-152-164

Fabric usage

50-50-55-55-60-60-65 cm
20-20-22-22-24-24-26 inches

Notions

- Button 1
- Zip 12-12-13-13-14-14 cm
- Fusable interfacing
- Optional: Replace the zip with 4 sets of buttons.



P0723 OVERSHIRT

Size 92-104-116-128-140-152-164

Fabric usage

70-80-90-100-110-125-135 cm
28-32-36-39-43-49-53 inches

Notions

- Buttons 9
- Fusable interfacing



P0923 JOGGER

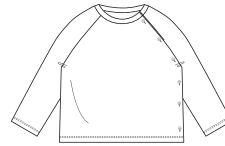
Size 92-104-116-128-140-152-164

Fabric usage

70-80-90-100-110-120-130 cm
28-32-36-40-44-48-52 inches

Notions

- Elastic 3cm
- Fusable interfacing
- Drawstring 90-90-90-100-100-120-130cm



P0123 BABY SWEATER

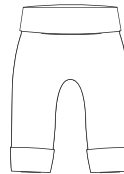
Size 56-62-68-74-80-86

Fabric usage

45-45-50-50-55-55 cm
18-18-20-20-22-22 inches

Notions

- Buttons 6
- Fusable interfacing

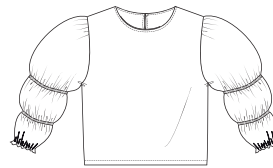


P0223 BABY TROUSERS

Size 56-62-68-74-80-86

Fabric usage

60-60-70-70-80-80 cm
24-24-28-28-32-32 inches



P0423 BLOUSE

Size 92-104-116-128-140-152-164

Fabric usage

95-100-105-110-120-135-150 cm
38-40-41-43-47-53-59 inches

Notions

- Button 1
- Loop for button
- Elastic 8mm



P0623 WAISTCOAT

Size 92-104-116-128-140-152-164

Fabric A | main fabric

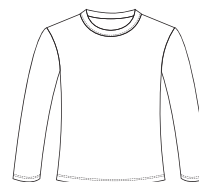
65-70-75-85-85-90-100 cm
26-28-30-34-34-36-40 inches

Fabric B | lining

55-60-60-65-65-70-75 cm
22-24-24-26-26-28-30 inches

Notions

- Optional: 5 Press studs or buttons
- Fusable interfacing

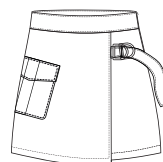


P0823 LONGSLEEVE

Size 92-104-116-128-140-152-164

Fabric usage

50-90-100-110-120-130-140 cm
20-36-40-44-48-52-55 inches



P1023 SKIRT

Size 92-104-116-128-140-152-164

Fabric A | main fabric

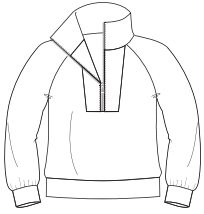
35-40-40-50-55-60-65 cm
14-16-18-20-22-24-26 inches

Fabric B | lining

30-35-35-40-45-50-55 cm
12-14-14-16-18-20-22 inches

Notions

- (Hidden) zip 12-12-12-14-16-16-18cm
- D-rings 2x
- Fusable interfacing



P1123 ZIP NECK SWEATSHIRT

Size 92-104-116-128-140-152-164

Fabric usage | 1 fabric

90-100-110-120-130-150-160 cm
36-39-44-47-51-59-63 inches

Fabric usage | 2 fabrics

Fabric A

85-85-90-100-110-120-125 cm
34-34-36-42-43-47-48 inches

Fabric B

25-25-30-30-30-30-35 cm
10-10-12-12-12-12-14 inches

Notions

- Zip 18-20-20-22-22-25-25 cm
- Fusable interfacing



P1323 SWEATER

Size 92-104-116-128-140-152-164

Fabric usage | 1 fabric

75-85-100-110-125-135-145 cm
32-36-42-44-49-54-57 inches

Fabric usage | 2 fabrics

Fabric A

60-65-65-70-75-80-85 cm
24-26-26-28-29-31-34 inches

Fabric B

40-45-50-55-60-65-70 cm
16-18-20-22-24-26-28 inches

Fabric C | tubular fabric

30 cm all sizes
12 inch all sizes

P1523 TROUSERS

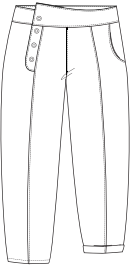
Size 116-128-140-152-164

Fabric usage

80-90-95-105-115 cm
32-36-38-42-46 inches

Notions

- Button/press stud 4x
- Fusable interfacing



P1723 LADIES WAISTCOAT

Size 36-38-40-42-44-46

Fabric A | main fabric

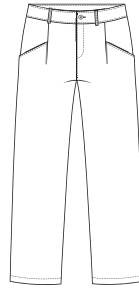
110-115-120-125-130-135 cm
43-45-47-49-51-53 inches

Fabric B | lining

75-75-75-100-105-110 cm
30-30-30-40-41-43 inches

Notions

- Optional: 5 Press studs or buttons
- Fusable interfacing



P1223 CHINO

Size 92-104-116-128-140-152-164

Fabric usage

70-80-90-100-110-120-130 cm
28-32-36-40-44-48-52 inches

Notions

- Button 1x
- Zip 11-11-12-12-12-13-13 cm
- Fusable interfacing



P1423 DRESS

Size 92-104-116-128-140-152-164

Fabric usage

80-100-120-140-150-160-170 cm
32-41-47-55-59-63-67 inches

Materials

- 8 Buttons or press studs
- Fusable interfacing



P1623 LADIES BLOUSE

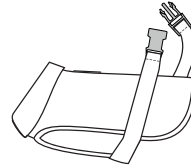
Size 36-38-40-42-44-46

Fabric usage

135-135-140-145-155-165 cm
54-54-56-57-61-65 inches

Notions

- Buttons 14
- Fusable interfacing



P1823 DOG JACKET

Size S-M-L

Fabric | main fabric & lining

65-75-100 cm
26-30-40 inches

Notions

- Fusable interfacing
- Snap buckle
- Bias strip 260-315-370 cm long and 1.8 cm wide
- Elastic cut 2x 18.6-20.8-22.9 cm and 8 mm wide