

nerida hansen



✂ Festival Top 



sewing pattern

www.neridahansen.com.au

DESIGNED IN AUSTRALIA

skill
level 2

beginner +

nerida hansen

The Festival Top is a gorgeous versatile blouse perfect for every occasion. It features voluminous tuck pleat sleeves with beautiful sleeve hem facings and offers the choice of either a cropped or fuller length. The pattern has side bust darts for a relaxed but flattering fit.

V-neck

- v-neck front neckline facing
- bound back neckline



BODY MEASUREMENTS - CM

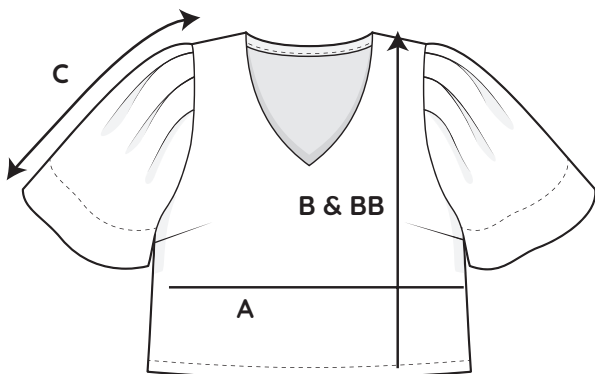
CM	6	8	10	12	14	16	18
bust	80	85	90	95	100	105	110
waist	61	66	71	76	81	86	91
hips	89	94	99	104	109	114	119

BODY MEASUREMENTS - INCHES

IN	6	8	10	12	14	16	18
bust	31 ½	33 ½	35 ½	37 ½	39 ½	41 ½	43 ¼
waist	24	26	28	30	32	33 ¾	35 ¾
hips	35	37	39	41	43	45	46 ¾

GARMENT MEASUREMENTS - CM

CM	6	8	10	12	14	16	18
A	96	101	106	111	116	121	126
B	54	54.5	55.5	56	56.5	57	58
BB	60	60.5	61.5	62	62.5	63	64
C	29	29.5	30	30.5	31	31.5	32



GARMENT MEASUREMENTS - INCHES

IN	6	8	10	12	14	16	18
A	37 ¾	39 ⅝	41 ⅝	43 ⅝	45 ½	47 ½	49 ½
B	21 ¼	21 ½	21 ⅞	22	22 ¼	22 ½	22 ⅞
BB	23 ⅞	23 ⅞	24 ¼	24 ⅜	24 ⅝	24 ¾	25 ¼
C	11 ⅜	11 ⅝	11 ¾	12	12 ¼	12 ⅝	12 ⅞

The intended style & fit of the Festival Top means the pattern includes some ease. If you would like more or less ease in your garment, use the garment measurements provided to chose the appropriate size for your preferences.

Measurement "A" refers to bust/hip circumference, "B" refers to the length of the cropped option, "BB" refers to the length of the full length option and "C" refers to sleeve length.

FABRIC RECOMMENDATIONS & METERAGES

For best results we love to use Nerida Hansen Fabrics cotton, linen/ cotton & linen wovens to make the Festival Top.

FABRIC WIDTH	SIZE 6-10		SIZE 12-14		SIZE 16-18	
	full length	cropped	full length	cropped	full length	cropped
mid-weight cotton 137cm/54" wide	1.55m / 1 ¾ yd	1.5m / 1 ⅝ yd	1.6m / 1 ¾ yd	1.55m / 1 ¾ yd	1.75m / 1 ⅞ yd	1.7m / 1 ⅞ yd
100% linen 140cm/55" wide	1.5m / 1 ⅝ yd	1.45m / 1 ⅝ yd	1.6m / 1 ¾ yd	1.55m / 1 ¾ yd	1.75m / 1 ⅞ yd	1.7m / 1 ⅞ yd
cotton voile/sateen 145-147cm/57" wide	1.5m / 1 ⅝ yd	1.45m / 1 ⅝ yd	1.55m / 1 ¾ yd	1.5m / 1 ⅝ yd	1.65m / 1 ¾ yd	1.6m / 1 ¾ yd

other notions required	<ul style="list-style-type: none"> • matching thread • lightweight interfacing: 30cm / 11 ¾"
-------------------------------	--

NOTES

- * unless otherwise specified seam allowances are 1cm (3/8") and neckline allowances are 6mm (1/4").
- * Unless sewing a gathering stitch, you should always start and finish any lines of stitching with a back-tack to prevent your stitching from coming undone.
- * fabric meterages include 5% horizontal & vertical shrinkage allowance.
- * fabric meterage requirements will vary according to selected fabric's width (requirements given for this pattern are for the recommended Nerida Hansen fabric qualities only, please calculate accordingly for alternative fabric selections)
- * this pattern refers to seams being finished with an overlocker, however, if you do not have an overlocker you can use a zigzag stitch.
- * cotton sateen can easily get 'white' pull lines - ensuring needles and pins used are sharp/new will eliminate (or at least minimise) this.

COPYRIGHT © NERIDA HANSEN FABRICS 2022. ALL RIGHTS RESERVED

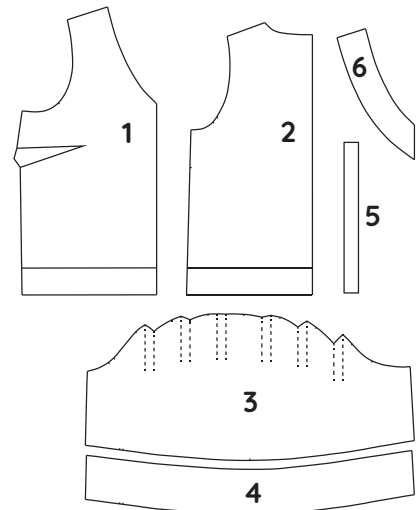
This pattern and instructions are for PERSONAL USE ONLY

No part of this publication may be reproduced, transmitted or stored in an information storage and retrieval system, in any form or by any means, electronic, mechanical, including photocopying, recording or otherwise, without prior permission in writing from the publisher.

SEWING TERMS USED IN THIS PATTERN	
Stay Stitch	Sewing a line of straight stitch, close to the cut edge, to prevent fabric stretching, particularly if the fabric is cut on a curve.
Basting	Sewing a line of temporary straight stitch to hold something in place. Usually done with a long stitch length so it can be easily unpicked.
Understitch	A line of stitching sewn close (under 3mm (1/8")) to the inside edge of a facing to stop it rolling towards the outside, or front, of the garment. Often used around necklines.
Ditch Stitch	A line of straight stitch sewn directly down the channel of an existing seam in order to secure layers underneath without the stitches being visible from the outside.
Top Stitch	A line of straight stitch on the outer face of a garment that is done for both functional and decorative purposes.
Selvedge	Is the tightly woven edge of a fabric, running along each side of a piece of fabric's lengthwise grain.
Straight Grain	Is the lengthwise grain of the fabric, made up of warp threads. The straight grain runs parallel to the selvedge.
Cut on the bias	To cut something at a 45° angle relative to the selvedge. Pieces cut on the bias have more stretch & flexibility than those cut on the straight grain, making it possible to ease them around curves.
Finish edges	To sew along the raw edge of fabric with either a zig-zag stitch on a normal machine or an overlocker to stop the fabric from fraying.

PATTERN PIECE INVENTORY & KEY

- v-neck front:** cut 1 on the fold
- back:** cut 1 on the fold
- sleeve:** cut 1 pair (2 total)
- sleeve hem facing:** cut 1 pair (2 total)
- bias binding:** cut 1 on the bias
- v-neck facing:**
cut 1 fabric on the fold, cut 1 interfacing on the fold



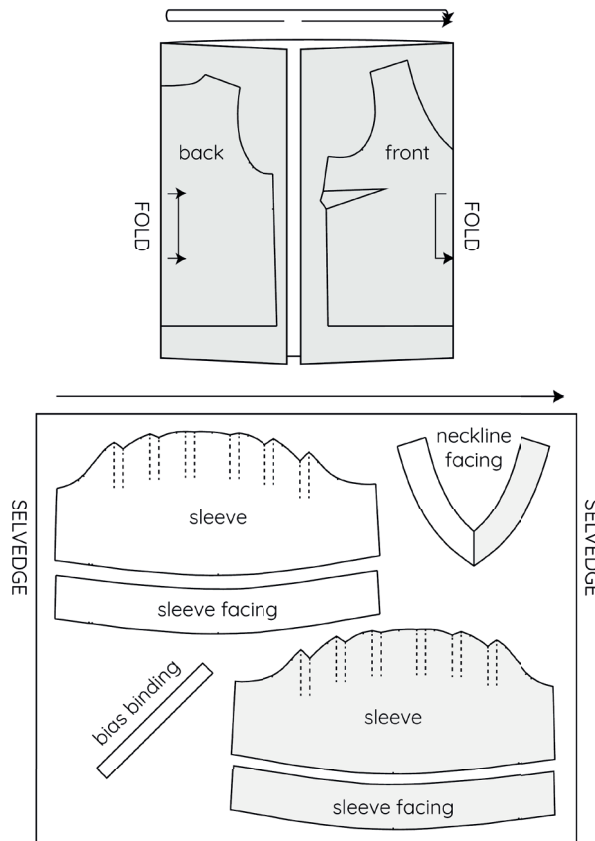
size cut lines	6 ————— 14 —————	denotes right side of fabric
	8 - - - - -	denotes wrong side of fabric
	10 16 - - - - -	denotes interfacing
	12 - 18 —————	
fold line	— — — — —	

Let's get started!

1 - CUTTING OUT

- Using the suggested cut layouts as a guide, position all your required pattern pieces on the fabric, taking note of any patterns to be placed on the fold of the fabric. Also note that if a pattern piece, such as the sleeve, indicates it needs to be cut as a pair, this means you will need to flip your pattern when cutting out the second piece so the two pieces are reflected/opposite versions of each other.
- Ensure the straight grain markings on the pattern pieces are parallel to the selvedge edges.
- Carefully pin the paper pattern to the fabric. Make sure, when cutting, you mark all notches around the pattern edge.
- Using a fabric marker or pin, mark the centre fold at the top and bottom of your bodice and facing pieces, as this will indicate the centreline of the garment.
- Transfer all the pattern markings for the darts to the wrong side of the fabric using tailor's chalk, water soluble pen or tailor's tacks.

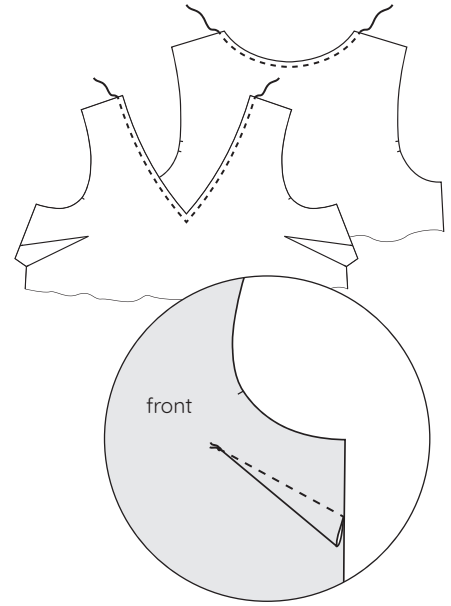
Suggested cut layout



2 - PATTERN PIECE PREP & DARTS - ALL VIEWS

sew - plain machine, straight stitch

- Stay-stitch around the necklines of the top front & back, just under 6mm (1/4") from the raw edge. This will help to prevent the neckline stretching out during construction.
- Make the darts by folding down the centre of each dart with the right side of the fabric together, so the dart legs and raw edges of the dart opening are aligned. Pin in place before sewing from the side edge to the dart point, along the dart leg markings. Do not back-tack at the dart point and instead leave long thread tails to carefully knot by hand in order to secure the stitching.



Press & clip threads

- Press the darts downwards, toward the hem direction. Clip all loose threads.
- Iron the fusible interfacing to the wrong side of the front neckline facing.

3 - FINISH BACK NECKLINE EDGE

Measure and cut bias strip

- Using a tape measure, or the bias strip itself, measure the back neckline edge. Add an extra 1.5cm (5/8") and cut the bias strip to length.

Press

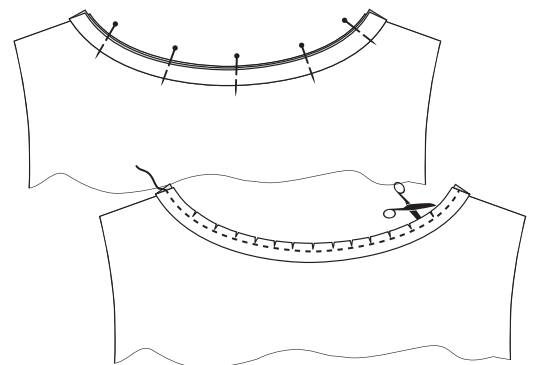
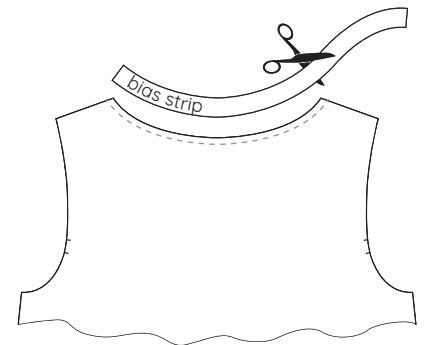
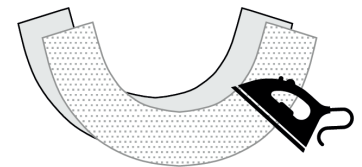
- Fold the back neck bias strip in half lengthwise with wrong sides together and press along the length of the strip.

Pin and sew - plain machine, straight stitch

- Align raw edges of the folded bias strip with the back neckline edge, right sides together. Ease around the curves and pin in place.
- Sew folded bias strip to back neckline using 6mm (1/4") seam allowance.

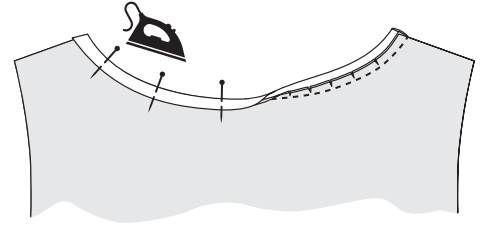
Clip & Press

- Clip into the seam allowances at 1.5cm (5/8") intervals, taking care not to clip through the stitches.
- Press the binding and seam allowances up & away from the garment before turning them to the inside, to sit flat against the wrong side of the neckline.



Pin and sew - plain machine, straight stitch

- g. Carefully pin the turned and pressed bias strip in place, ensuring the folded strip is a consistent 1cm (3/8") width the whole way around the neckline edge.
- h. Top stitch just under 1cm from the neckline edge to secure the folded binding edge on the inside of the garment.



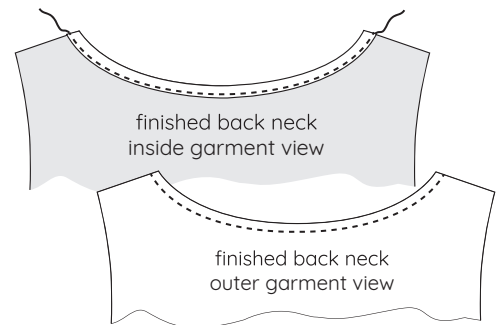
4 - FINISH FRONT NECKLINE EDGE

Finish Edges - overlocker/zig-zag stitch

- a. Finish the outer edge of the front facing piece, taking care not to stretch the outer edge as you sew.

Pin and sew - plain machine, straight stitch

- b. Placing right sides together, pin the front facing to the front neckline, align the neckline & shoulder edges and match centre fold markings.
- c. Sew pieces together around the front neckline edge using a 6mm (1/4") seam allowance.

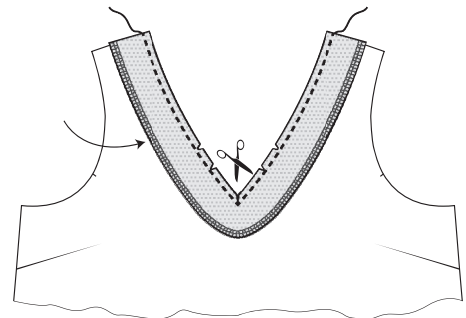


Clip seam

- d. View A - Clip into the seam at the V-point and along the curves, getting as close as you can to the stitch line without cutting through it.

Press

- e. Press the facing and neckline seam allowances up and away from the garment.

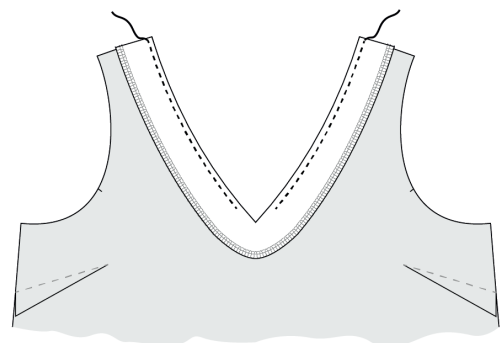


Understitch - plain machine, straight stitch

- f. View A - understitch along each side of the inside neckline edge of the facing, stopping 2cm (3/4") before the end of the V-point.

Press and clip threads

- g. Turn facing to inside of garment and press. Clip all loose threads.



5 - SHOULDER SEAMS

Pin and sew - plain machine, straight stitch

- a. Carefully align and pin front and back shoulders with right sides together, leaving the front facing loose at this stage. The back neckline edge should align with the facing seamline.

WATCH INSTRUCTIONAL VIDEO HERE:

<https://youtu.be/o7gNzMGCz6c>

- b. Fold the front facing over the neck edge to the back so that the right side of the facing is together with the wrong side of the back shoulder and the raw shoulder edges are aligned. Make sure that the facing's neckline seam allowance and understitching is fully folded over to the back and the seamline sits directly over the edge of the back neckline binding. Carefully pin in place for both shoulders.
- c. Sew shoulders together with the back shoulder sandwiched between the facing and front shoulder, 1cm (3/8") from the raw edges.

Finish edges - overlocker/zig-zag stitch

- d. Clip the neckline corner of the seam allowances to reduce bulk and finish the shoulder seam edge.
- e. Turn facing out the right way, to sit on the front again.

Press and clip threads

- f. Press shoulder seams to the front and trim threads.

6 - SIDE SEAMS

Pin and sew - plain machine, straight stitch

- a. Pin the front and back of the top, right sides together, along the side seams. Sew from the armscye edge to the hem with a seam allowance of 1cm (3/8").

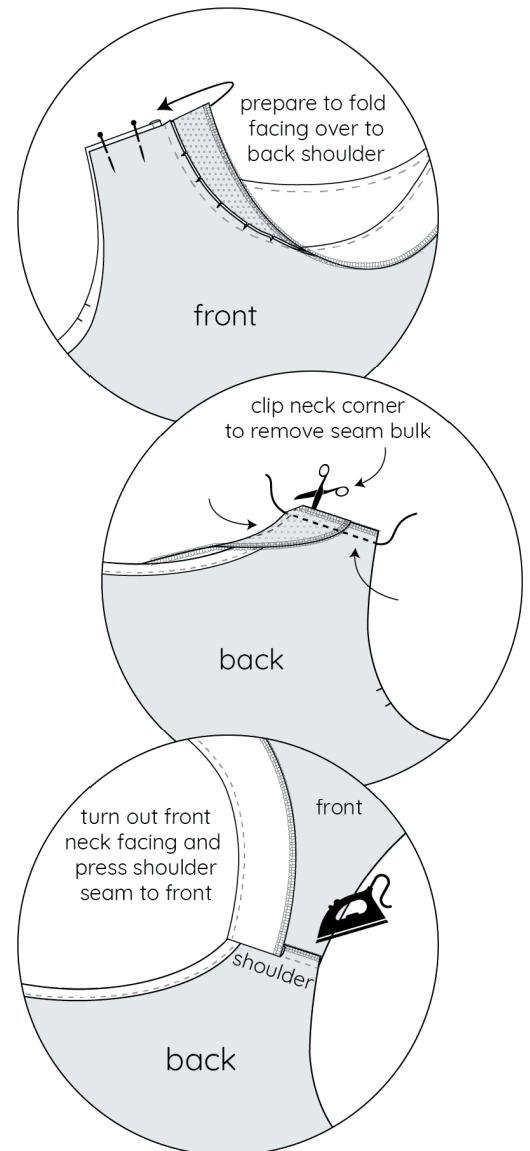
Finish edges & press - overlocker/zig-zag stitch

- b. Finish the side seam edges, clip all loose threads and press towards the back.

7 - ASSEMBLE THE PLEATED SLEEVES

Pin and sew - plain machine, straight stitch

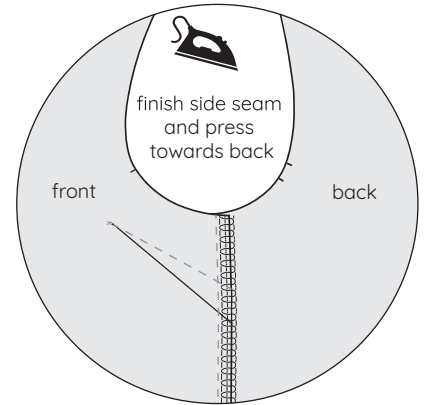
- a. Carefully fold along the indicated lines to close each of the six (6) pleats along the sleeve head, aligning the 3 notches of each pleat so the raw edges of the sleeve head all match up. Take note of the fold direction - all pleats should face away from the central shoulder notch. Pin in place.
- b. Sew a basting stitch just inside the 1cm (3/8") seam allowance to secure the folded pleats.



- c. Fold & pin the sleeves in half so that right sides are together and the sleeve side edges are aligned. Sew with a 1cm (3/8") seam allowance.

Finish edges & press - overlocker/zig-zag stitch

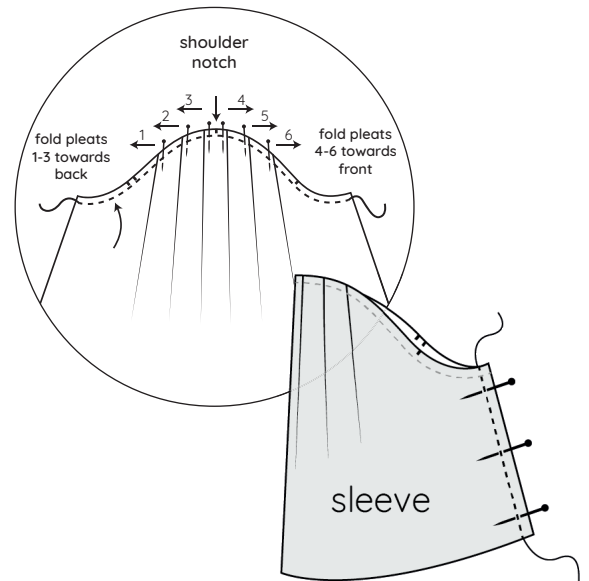
- d. Finish side seam edges, clip all loose threads and press towards the front of the sleeve.



9 - INSERT SLEEVE

Pin and sew - plain machine, straight stitch

- a. With the bodice turned inside out and sleeve turned right side out, place the sleeve inside the bodice, aligning the sleeve and garment side seams, back and front armsyce notches, as well as the sleeve's central shoulder notch with the shoulder seam. Make sure each sleeve is in its correct corresponding armsyce.
- b. Pin sleeve into position and carefully sew sleeves into armholes, 1cm (3/8") from the raw edge.



Finish edges & press - overlocker/zig-zag stitch

- c. Finish armhole seam edges, trim threads.
- d. Using a tailors ham (or rolled up towel) inside of the sleeve head, carefully press the sleeves and seam allowances away from the top.

10 - SLEEVE HEM FACING

Pin and sew - using straight stitch

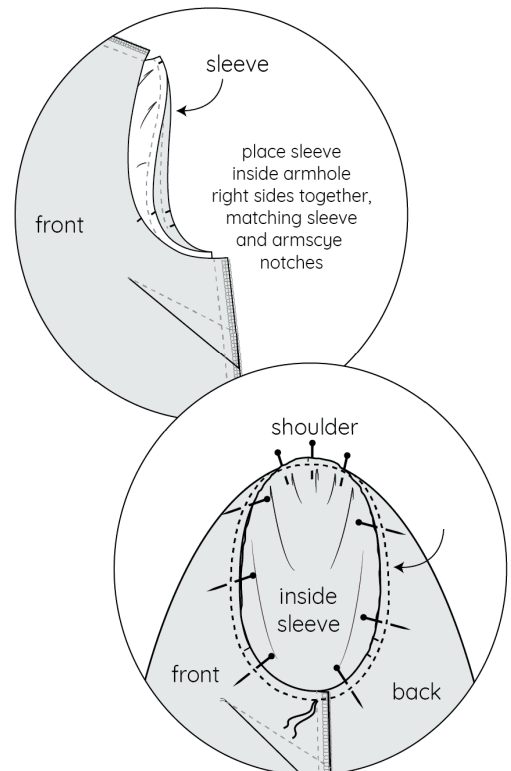
- a. With right sides facing, align & pin the short edges of the facing. Sew the facing into a loop, 1cm from the raw edge.

Press and cut the threads

- b. Press side seams open and clip all loose threads.
- c. Fold down the upper raw edge (without notches) of the sleeve facing to the wrong side of the fabric by 1cm and press.

Pin and sew - plain machine, straight stitch

- d. Place the facing around the sleeve opening with right sides together, aligning the bottom edge of the sleeve with the bottom edge of the facing. Align the side seams and notches and carefully pin.



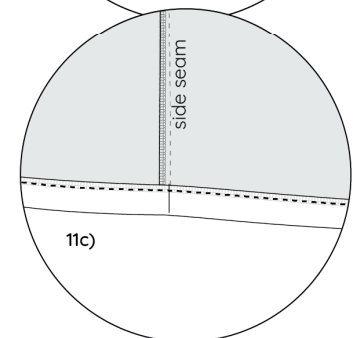
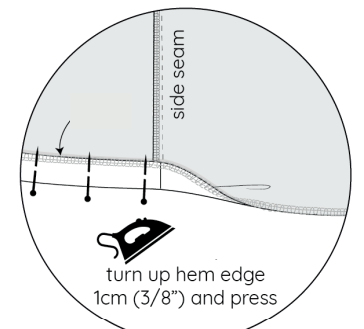
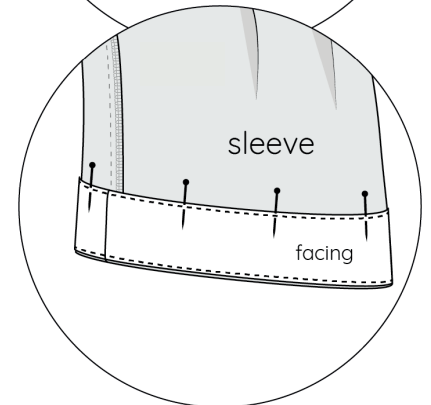
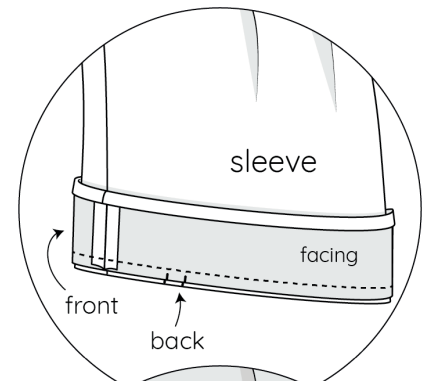
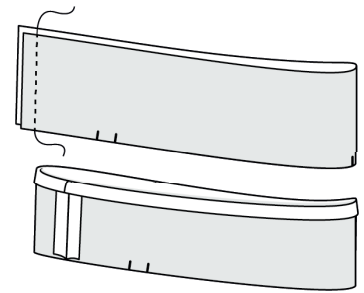
- e. Sew the sleeve and facing together, 1cm (3/8") from the raw edge.

Press and understitch - plain machine, straight stitch

- f. Press the facing & seam allowances down and away from the sleeve. Understitch the facing, sewing a line of stitching around the facing, just under 3mm (1/8") from the seam.
- g. Flip the facing to the inside of the sleeve & press.

Pin and sew - plain machine, straight stitch

- h. On the inside of the garment, pin and edge stitch around the upper folded edge of the sleeve facing to secure it in place.



11 - HEM

Finish edges - overlocker/zig-zag stitch

- a. Finish the bottom hem edge of the top to neaten.

Press & pin

- b. Evenly turn up the hem edge by 1cm (3/8"), press & pin.

Sew - using straight stitch

- c. Top stitch around the hem to secure the finished edge on the inside of the garment, sewing just under 1cm (3/8") from the bottom hem edge.

12 - CHECK AND FINISH GARMENT

Check your garment over, clipping any remaining loose threads and giving the garment a final press.



Your Festival Top is now complete, enjoy it!

